



**School Road ,**  
Alcester, B49 5DJ

Jeremy  
McGinn & Co 

# Offers In The Region Of £74,950



A purpose built, first floor, Retirement Apartment in Malin Court situated close to the centre of Alcester, with all convenient amenities of the town a short walk/drive away.

The Apartment, on the first floor is accessed by a lift or stairs. Enter into a good size Hall giving access to the large, bright Living room with window to rear and an attractive outlook over the communal, well-tended gardens and mature trees beyond. An arch opens to the fitted Kitchen with window overlooking the gardens. There is also a good size Storage Cupboard off the living room.

From the hall, further doors lead to a fitted Shower room and a Double Bedroom with fitted wardrobes.

All rooms have a well-positioned emergency pull-cord for added safety along with a security telephone positioned in the hall.

First Port Management Co. Ground Rent - £57.16 per annum - paid half yearly £263.16 / Service charge - £3646.44 - paid half yearly £1823.44. Lease unexpired approx 80 yrs.

The apartment is offered for sale with NO UPWARD CHAIN.





**Tax Band: C**

**Council: Stratford**

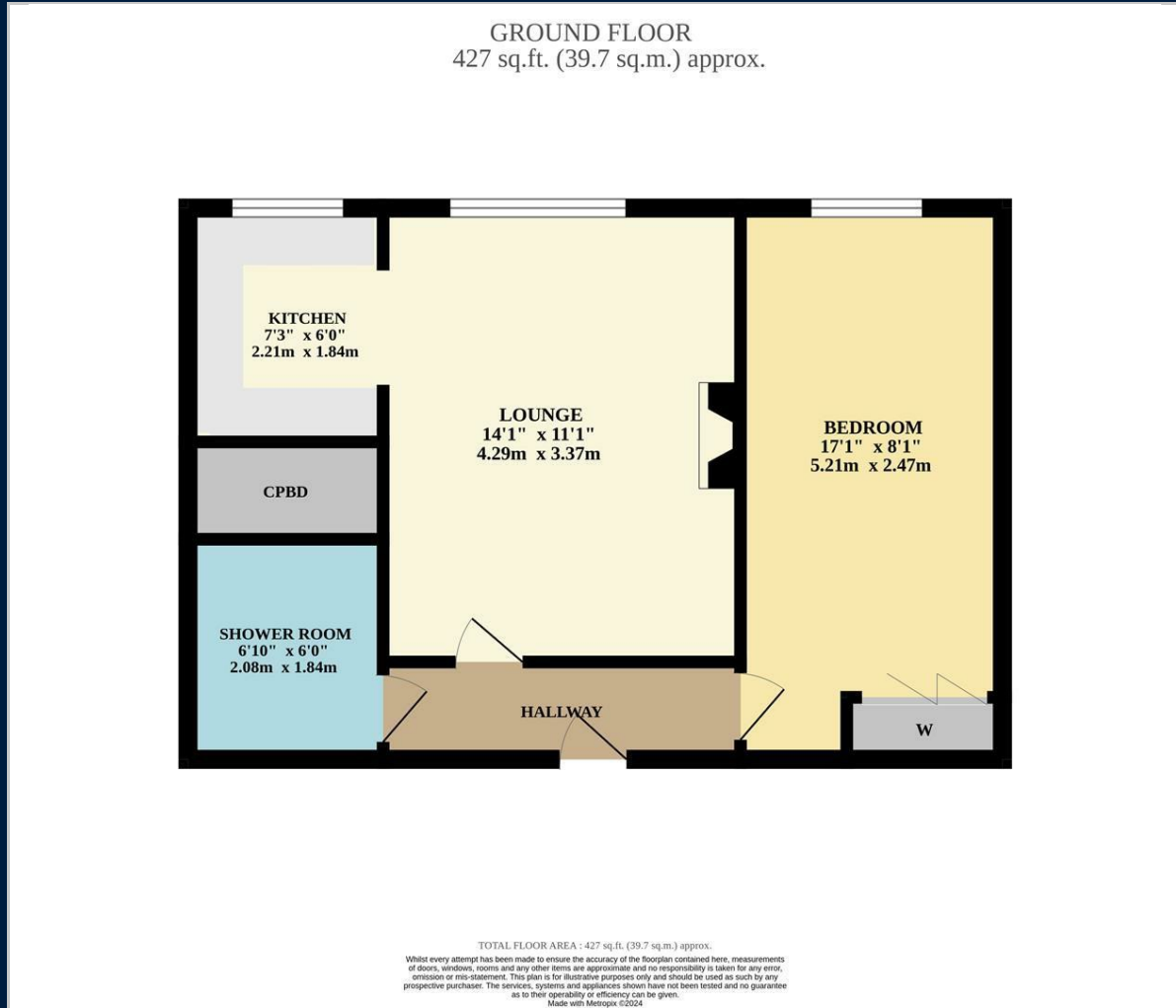
**Tenure: Leasehold**



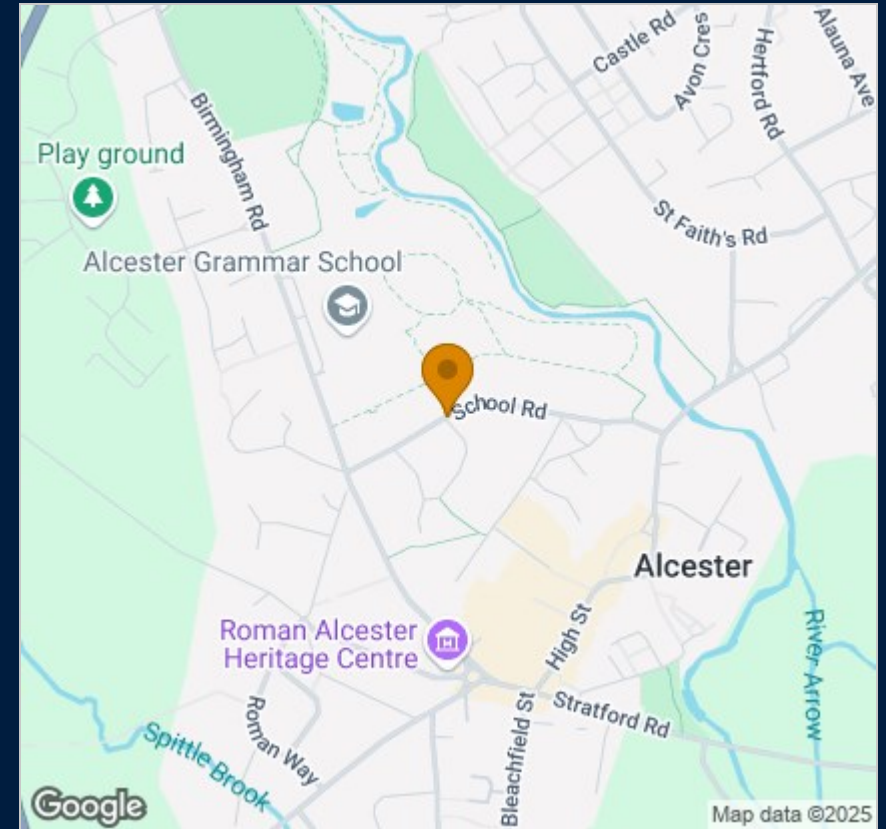
Alcester dates back to around AD 47 and was founded by the Romans as a walled fort on the confluence of the River Arrow & the River Alne and boasts a wealth of stunning characterful properties. The Town has developed into an extremely popular place to live with a strong community who are rightly proud of their Town. The historic High Street offers a range of independent shops & cafés in addition to restaurants and pubs and a Waitrose supermarket.

The quality of local schools is a big draw to the Town including the extremely well regarded Alcester Grammar School. For more comprehensive amenities, nearby Stratford upon Avon offers a wealth of facilities including the world famous Royal Shakespeare Theatre. Fast train services from Warwick Parkway give access to London in a little over an hour.

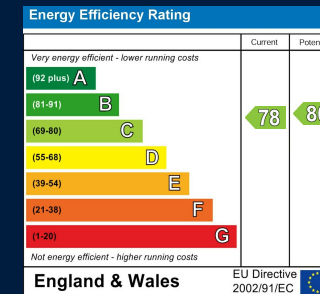
# Floor Plan



# Map



# Energy Performance



These particulars, whilst believed to be accurate are set out as a general outline only for guidance and do not constitute any part of an offer or contract. Intending purchasers should not rely on them as statements of representation of fact, but must satisfy themselves by inspection or otherwise as to their accuracy. No person in this firm's employment has the authority to make or give any representation or warranty in respect of the property.

49A High Street, Alcester, Warwickshire, B49 5AF  
 Tel: 01789 868587 Email: alcester@jeremymcginns.com www.jeremymcginns.com